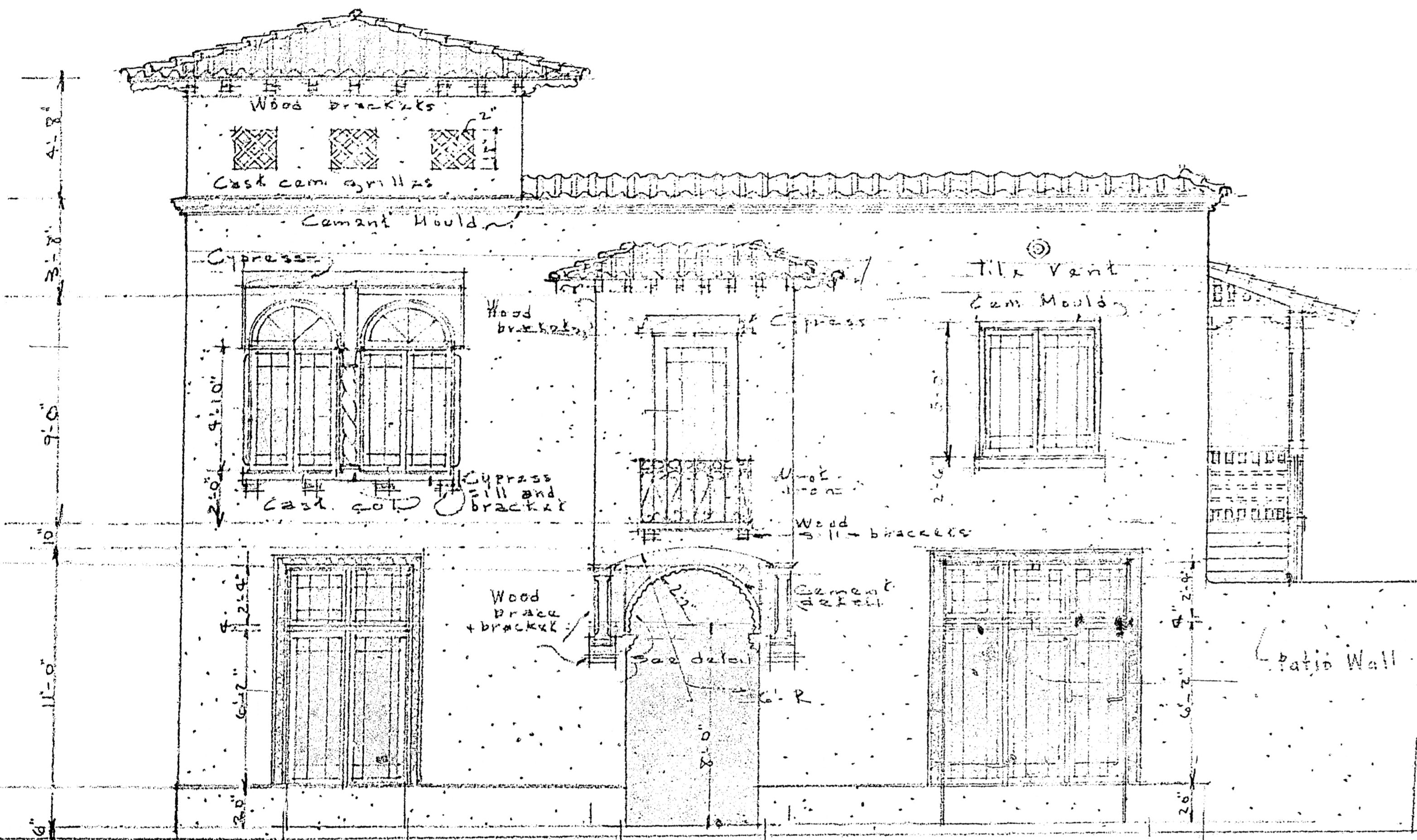
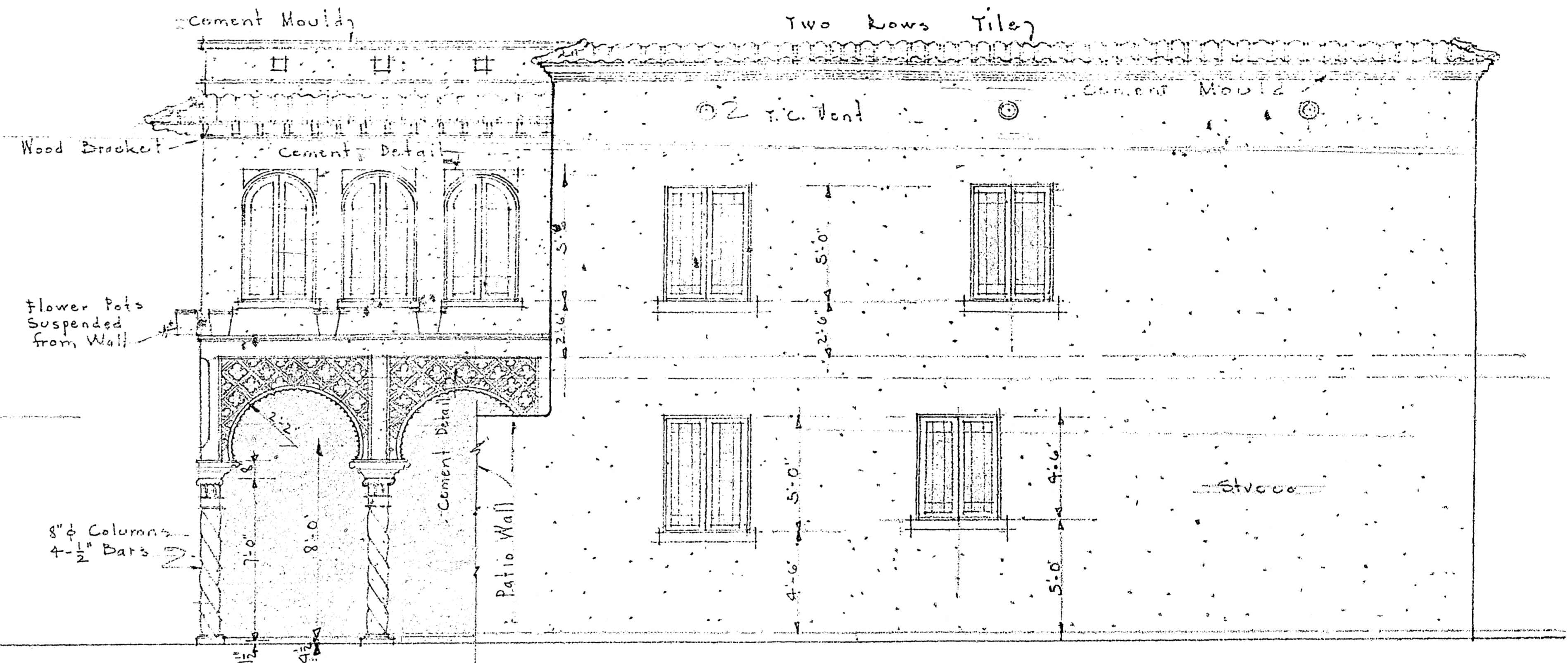


ELEVATION TO ALHAMBRA CIRCLE

SHEET	4 of 4	Hoover & Co. AIA Architect	C.O.M.
DRAWN	DXN	301. Congress Bldg - Miami	1126
CHECKED	MR. L. T. DUPAL	STORRS & HOTEL	DATE 8/9/24
	CORNER GABLES		REVISION



RIGHT ELEVATION
 scale: $\frac{1}{4}'' = 1'-0''$



LEFT ELEVATION
 scale: $\frac{1}{4}'' = 1'-0''$

SHEET	Geoffrey AIA Architect	C.O.M.
5	301-2 Congress Bldg. Miami	1126
DRAWN	STORES & HOTEL	DATE
ABD + DAN	MR. E. J. DUVAL	8/14/61
CHECKED	CORAL GABLES	REV'D.