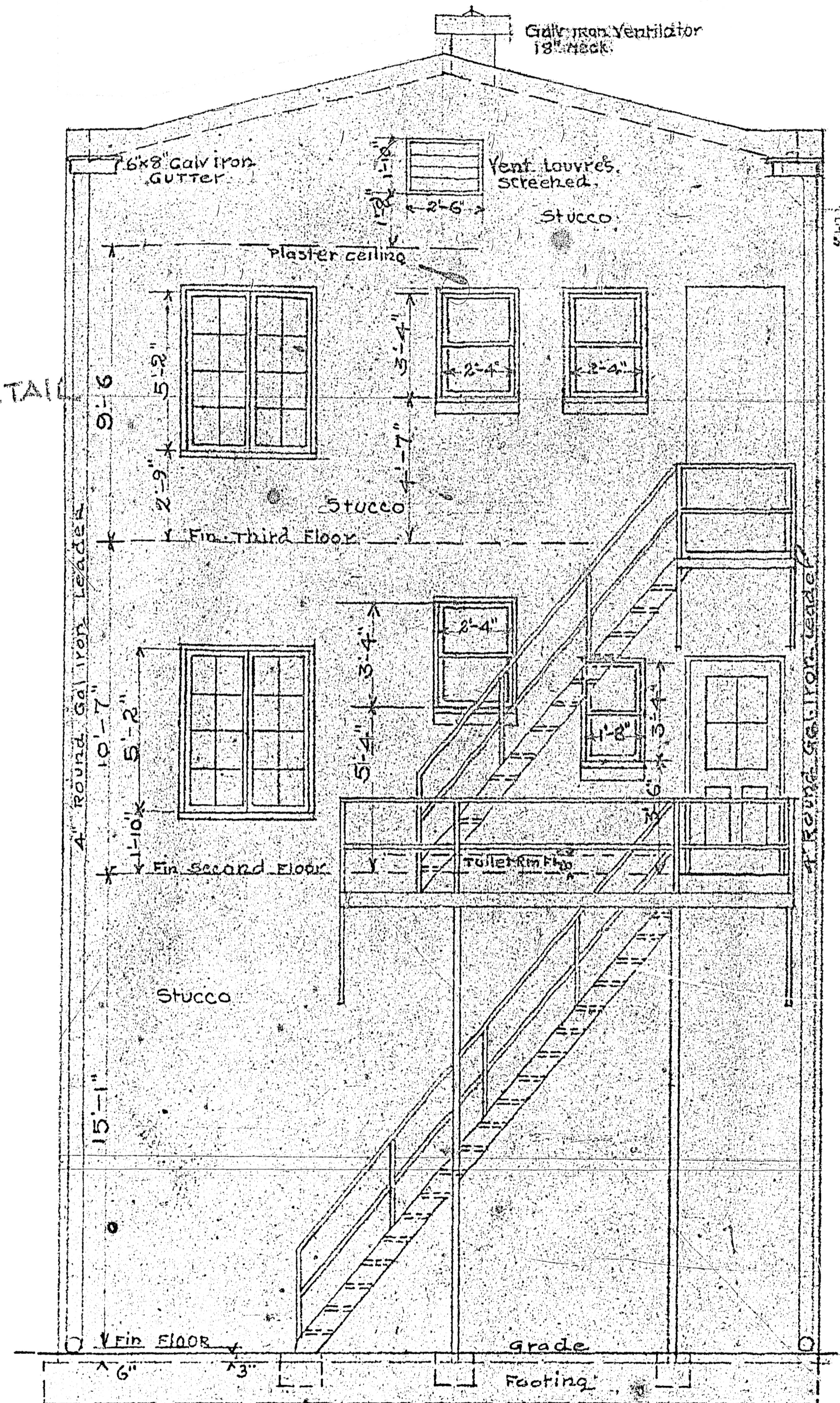
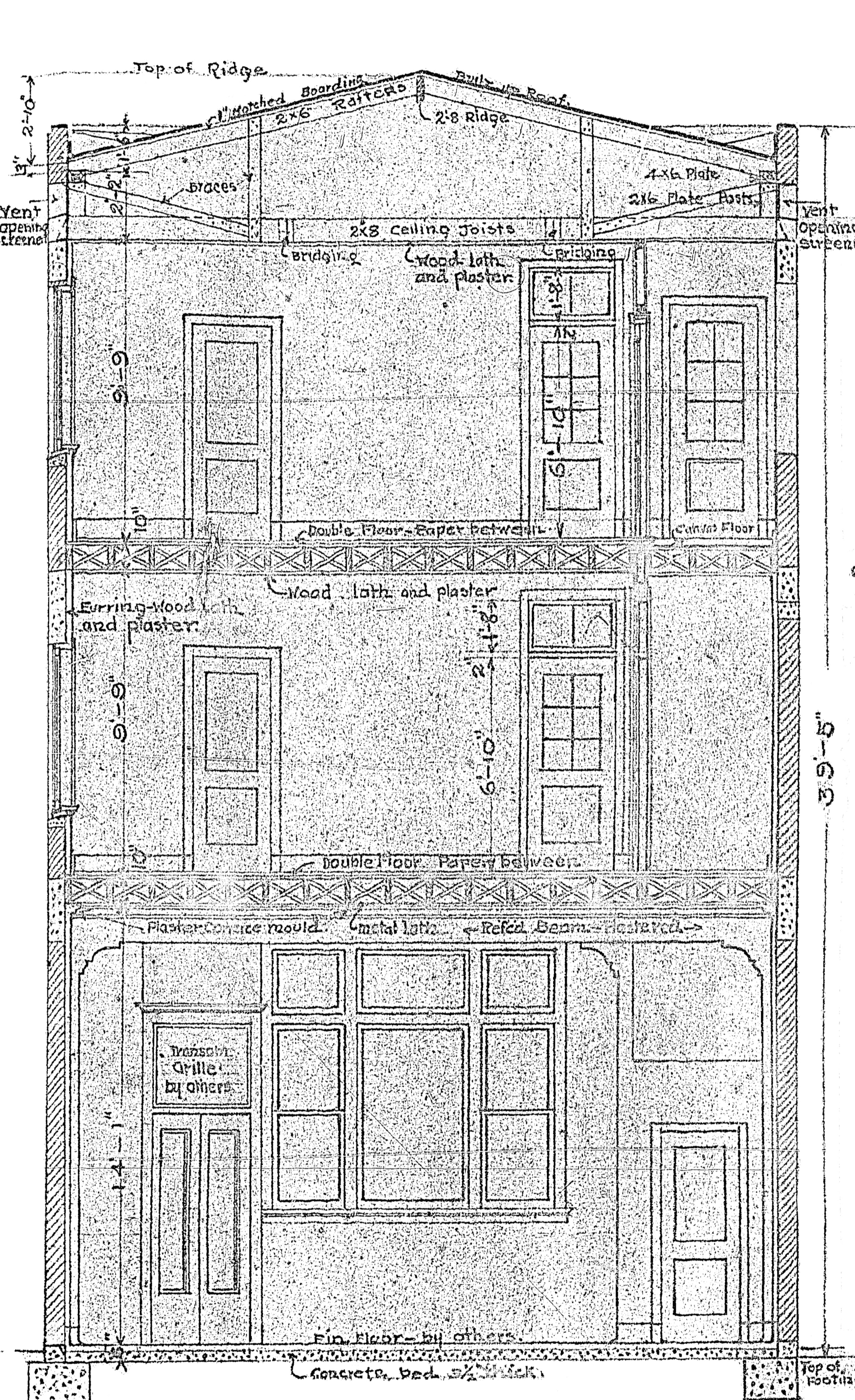


FRONT ELEVATION

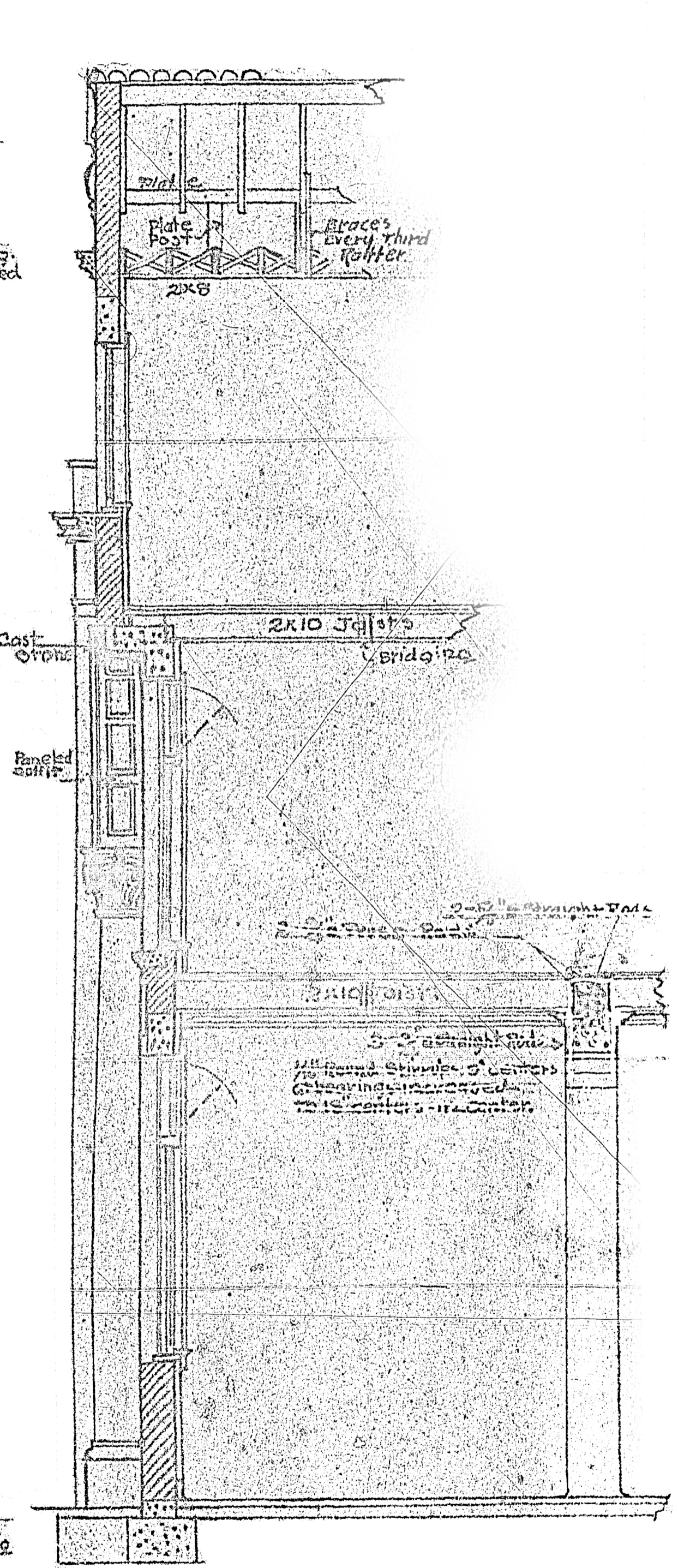


REAR ELEVATION

SCALE 1/4" = 1'-0"



SECTION AT "A-A"



SECTION AT "B-B"

SHEET Nº 5	OFFICE BUILDING	JOB Nº F-5
	PONCE DE LEON BOULEVARD CORAL GABLES	
DATED 4-7-26	FOR CHES BROUGH GLOVER & CO., INC.	REVISED
	DUDLEY STUBBS & HELLY, ARCHT'S.	
	2314 PONCE DE LEON BLVD, CORAL GABLES	